



Paterson Charter School for Science & Technology Resource Directory



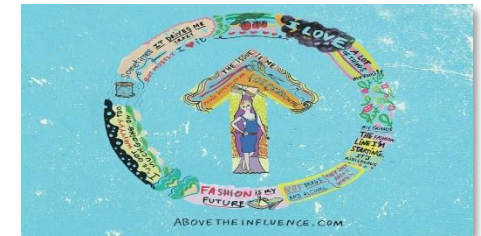
<https://www.2ndfloor.org/>



<https://www.sadd.org/>



<https://drugfree.org>



<https://abovetheinfluence.com/>



<https://www.nj.gov/education/families/>



clr@2022

Paterson Charter School for Science & Technology

Resource Directory for Mental Health, Behavioral Health, & Social Service Agencies

Program's Name	Address Phone Website	Services Provided	Population Served	Languages	Fees/Payment Information
Association for Special Children & Families	P.O. Box 494 Hewitt, NJ 07421 Phone: (973) 728-8744 Helpline: (973) 728-0999 Website: https://ascfamily.org/	Special education advocacy, parent support groups, individual consultations, children's activities	Families with children and young adults, birth to age 26, with full range of disabilities	English, Spanish	No fees in Passaic County
Center for Family Resources	12 Morris Road Ringwood, NJ 07456 Phone: (973) 962-0055 Website: http://centerforfamilyresources.org/	Head Start preschool, Early Head Start childcare, food pantry, rental and utility assistance, parent education, family support groups	Families and their 0 to 5 years old children	English, Spanish, Arabic	Free to families that meet federal poverty guidelines
Circle of Care for Families and Children of Passaic County, Inc. Care Management Organization (CMO)	3 Garret Mountain Plaza Suite 200 Woodland Park, NJ 07424 Phone: (973) 942-4588 Website: www.circleofcarecmo.org	Comprehensive care management organization (CMO) services for children and families with multiple emotional and behavioral challenges, substance abuse and dual diagnosis (development disabilities/mental health)	Children age 5 to 21 with developmental and intellectual disabilities, behavioral health needs, or substance abuse needs	English, Spanish, Arabic	No fee: families must complete Medicaid application to be eligible for services

Daytop New Jersey	80 W. Main Street Mendham, NJ 07945 Phone: (973) 543-5656 (888)4-DAYTOP Website: www.daytopnj.org	Substance use and co-occurring disorder treatment (residential and outpatient)	Ages 13 to 20	English, Spanish	No fees for treatment component
Division of Child Protection & Permanency (DCP&P)	100 Hamilton Plaza, 11 th floor Paterson, NJ 07501 Phone: (973) 523-6090 Website: https://www.nj.gov/dcf/about/divisions/dcpp/	Child protection services	All ages	English, Spanish	No fees
ECAP Program	783 Riverview Drive Totowa, NJ 07512 Phone: (973)523-4547	ECAP program works in conjunction with caseworkers from DCP&P who are handling problems of child abuse and neglect. ECAP aides work directly with these families with four main objectives: <ol style="list-style-type: none"> 1) To enable family to remain intact in their own home 2) To identify and help document child abuse/neglect situations. 3) To assure safety to children while DCP&P formulates plan for them 4) To prevent child abuse/neglect by strengthening family life and teaching parenting and home management skills. 			

Family Court Juvenile Unit	401 Grand Street Paterson, NJ 07505 Phone: (973)247-8519 Website: https://www.pcponj.org/divisions/administrative_trial_division/juvenile_unit.php	Understanding juvenile delinquency proceedings	Up to age 18	English, Spanish	No fees
Family Intervention Services	655 Broadway Paterson, NJ 07514 Phone: (973)523-0089 Website: https://njarch.org/resource/family-intervention-services-fis-paterson/	Pre & post adoption Counseling Outpatient Counseling for Children and Families	All ages	English, Spanish	Free Medicaid
Family Support Organization of Passaic County	810 Belmont Avenue, 2 nd floor, Suite 200 North Haledon, NJ 07508 Phone: (973)427-0100 Website: https://www.passaicresourcenet.org/search/family-support-organization-fso-of-passaic-county/	Educate families about community resources, accessing benefits/services for children, systems with which they may be involved (such as Juvenile Justice Commission, mental health system, Department of Child Protection and Permanency, Children’s System of Care, educational system); offer support groups, trainings, and presentations; direct and one-on-one peer support to parents/caregivers enrolled with local Care Management Organization	Passaic County families of children with emotional, behavioral, developmental, and intellectual challenges and substance abuse needs	English, Spanish	Free
Jewish Family Services	925 Allwood Road Clifton, NJ 07012 Phone: (973)777-7638 Website: https://jfsclifton.org/	Play therapy – child centered, directed, sand tray, family; family therapy; Parenting Journey—12 sessions to help parents tune in to ways they were parented; Kazdin parenting training;	Ages 2 and up, Passaic County residents primarily, will take out of county with insurance P.A.L.S. program for Passaic County	English, Spanish, Hebrew, Yiddish	Medicaid, Medicare, most managed care insurance plans, private pay, sliding scale possible P.A.L.S. program funded by Division on Child Protection & Permanency

		family group for social skills; P.A.L.S. – 6-month therapeutic program for children exposed to domestic violence; advanced practice psychiatric nurse for medication evaluation and follow up, only for clients receiving therapy at the agency; intensive in-home behavioral service; parent resource library for parents of children with special needs; consultations for working with child study teams; parenting group for youth involved in the juvenile justice system; Trauma Center for children	children ages 2 to 12 exposed to domestic violence Transportation available within 10 miles of agency		(DCP&P, formally DYFS); no charge to children or parents in the program
Jewish Family Service of North Jersey	One Pike Drive Wayne, NJ 07470 Phone: (973)595-0111 Website: https://www.jfcsnnj.org/mental-health-services	Individual and family counseling, play therapy, social skills groups, parenting workshops, anger management	All	English	Insurance and sliding scale
Mental Health Association in Passaic County, Consumer Parent Support Network	404 Clifton Avenue Clifton, NJ 07011 Phone: (973) 478-4444 Website: www.mhapassaic.org	Case management services, one to one peer support, parenting education workshops, advocacy, and ongoing parent support groups	Adults/parents with mental health diagnosis	English, Spanish	Free

Mental Health Clinic of Passaic Adult and Child Outpatient	111 Lexington Avenue Passaic, NJ 07055 Phone: (973) 471-8006 Website: https://mhcp.org/ Outpatient annex: 124 Gregory Avenue Passaic, NJ 07055 Phone: (973) 928-7244	Outpatient mental health counseling consisting of individual, group, and family psychotherapy; play therapy; psychiatric evaluations; medication monitoring	All ages with mental health disorder	English, Spanish	Sliding scale based upon income and number in family, private insurance and managed care, Medicaid, Medicare, self-pay
Mental Health Clinic of Passaic Community Care Program	1451 Van Houten Avenue Clifton, NJ 07013 Phone: (973) 473-2775 Website: www.mhcp.org	Intensive mental health services	Children and adolescents ages 4 to 17 and their families	English, Spanish	Sliding scale based upon income and number in family, private insurance and managed care, Medicaid, Medicare, self-pay
Mental Health Clinic of Passaic The Family Center	111 Lexington Avenue Passaic, NJ 07055 Phone: (973) 471-8006 Website: www.mhcp.org	Home-based/office-based treatment related to abuse and neglect through specialized individual and family counseling and psychiatric services	Children from infancy through adolescence and their families	English, Spanish	Sliding scale based upon income and number in family, private insurance and managed care, Medicaid, Medicare, self-pay

New Life Recovery	1810 Macopin Road West Milford, NJ 07480 Phone: (973) 728-7788 Email: info@newliferecoverycenter.net www.newliferecoverycenter.net	Outpatient addiction services treatment, intensive outpatient services	Adolescents, adults	English	Medicaid, Aetna insurance, other private insurance if there is an out of network benefit, sliding scale
Options Counseling Center	9 West Broadway, 3 rd floor Paterson, NJ 07505 Phone: (973) 345-1883 After business hours: (732) 763-3724	Adolescent mental health/co-occurring (mental health and substance abuse) half-day partial care program, outpatient counseling for adolescents, intensive outpatient counseling program for substance abuse treatment, psychiatric services, multifamily groups, family counseling, transportation available	Ages 12 to 18 Handicap accessible	English, Spanish	Most third-party insurance accepted, Medicaid, sliding scale
Passaic County Children’s Mobile Response & Stabilization Services (CMRSS) - Family Crisis Intervention Unit (FCIU)	655 Broadway Paterson, NJ 07514 Phone: (973) 324-7891 Website: www.Fisnj.org	Behavioral crises de-escalation and stabilization, linkage to community services, in-home therapeutic services, advocacy with education and courts, referrals as necessary	All youth in Passaic County up to the age of 21, including those with developmental delays and substance use disorders	English, Spanish, Russian, Ukrainian, & Turkish	No fees for dispatches. Medicaid or related for in-home counseling services .
Passaic County Court Appointed Special Advocates (CASA) for Children	415 Hamburg Turnpike, Suite B1 Wayne, NJ 07470 Phone: (973) 832-4002 Website: https://www.passaiccountycasa.org/	Children in out-of-home placement in Passaic County	All ages	English, Spanish	N/A

Pathways Counseling Center	16 Pompton Avenue Pompton Lakes, NJ 07442 Phone: (973) 835-6337 Website: https://www.pathwayscounseling.org/about-us	Individual counseling for children and parents/guardians	Children age 5 and older	English	Private insurance, sliding scale available depending on individual circumstances
New Jersey Children's System of Care (CSOC) Perform Care	Phone: 1-877-652-7624 Website: https://www.performcarenj.org/families/behavioral/index.aspx	The New Jersey Children's System of Care (CSOC) is a division of the New Jersey Department of Children and Families. CSOC provides supports to youth with behavioral health or developmental disability diagnoses whether or not they are involved with child protective services. It also provides coordinated access to substance use treatment services for eligible youth.	Birth to 21	English, Spanish, Multi-language interpreter services	Medicaid, Medicare, most managed care insurance plans, private pay, sliding scale possible

SERV Centers of NJ, Inc. (Clifton Behavioral Healthcare)	777 Bloomfield Avenue Clifton, NJ 07012 Phone: (973) 594-0125 Website: www.servbhs.org	Family and individual counseling, psychiatric assessments, medication management	Ages 6 and up with behavioral health and co-occurring disorders (mental health and substance abuse)	English, Spanish	Medicaid, Medicare, sliding scale
St. Joseph's Regional Medical Center, Outpatient Mental Health Clinic	56 and 60 Hamilton Street Paterson, NJ 07505 Phone: (973) 754-4750 Website: www.stjosephsh ealth.org	Psychiatric evaluation; assessment. individual, family and group therapy; medication management	Ages 5 and older; clients who consent to treatment and have DSM diagnosis	English, Spanish, Farsi, Cyracom translation phones for access to hundreds of different languages, American Sign Language	Fee schedule based on Medicaid/Medicare rates; Charity Care available
St. Joseph's Psychiatric Emergency Services (PES)	703 Main Street Paterson, NJ 07503 Phone: (973) 754-2230 Website: https://www.stjosephshealth.org/clinical-focuses/behavioral-health-services/item/1931-psychiatric-emergency-services-screening	The mission of the PES/Screening Center is to assist any individual in resolving any crisis/conflict associated with psychiatric illness. Staff promptly evaluate clients in order to determine type of treatment required and arrange for the provision of such treatment in least restrictive setting as close to home as possible. The expectation is that the provision of services and relevant supports will result in resolution of the crisis.	All ages	Off-site English and Spanish (when available) On-site English and Spanish; interpreter/ Language Line for other languages	Medicaid billed only

		<p>The PES/Screening Center offers immediate crisis intervention services, which are culturally competent, as well as service procurement to de-escalate client's distress and to help maintain or recover his/her level of functioning. Emphasis is on stabilization so the client can actively participate in the treatment plan.</p> <p>Treatment may take place in the form of face-to-face evaluation in hospital emergency rooms or in the community via mobile outreach, polycom video conferencing, or by telephone. All services are available 24 hours per day, 7 days per week. Duration of treatment varies from person to person, but stabilization, referral, and linkage are achieved in every instance.</p>			
St. Mary's Hospital Outpatient	Seton Center 530 Main Avenue Passaic, NJ 07055 Phone: (973) 470-3513 Website: https://www.smh-nj.com/	Individual, family, and group therapy; psychiatric evaluations; medication education and monitoring; psychosocial assessment	Children 6 to 21 and adults 22 to 80	English, Spanish, Hebrew	Medicaid, Charity Care, private insurance/HMO when in-network.

St. Mary's Hospital Psychiatric Community Home	33 Mineral Spring Avenue Passaic, NJ 07055 Phone: (973) 470-3181 Phone: (973) 773-3005 Email: Juliana.natiello@smh-passaic.org	Residential program for adolescents to receive therapeutic services that will help integrate them back into their communities; provides behavior modification system, group therapy, individual therapy, family therapy, psychiatric services, and community-based activities	Ages 11 to 17	English, Spanish, Portuguese, Creole, French, Gujarati	Medicaid-funded. Through Care Management Organization (CMO) or Children's Crisis Intervention Services Unit
Straight & Narrow, Inc. Family Success Center and Prevention Programs	101 Cedar Street Paterson, NJ 07501 Phone: 973-345-6000 Website: https://ccpaterson.org/sn	Information and referrals, parenting classes (English and Spanish), Parents Anonymous support group, parent-child activities, monthly workshops	All ages	English, Spanish	Free
Wayne Counseling & Family Services	1022 Hamburg Turnpike Wayne, NJ 07470 Phone: 973-694-1234 Website: https://www.waynecounselingcenter.org/	Outpatient counseling, family counseling, substance abuse counseling	Passaic County and surrounding area	English	Sliding scale, private insurance, Medicaid
Youth Consultation Services Kilbarchan Campus	81 E. 39 th Street Paterson, NJ 07514 Phone: (973)-482-8411 Website: https://www.ycs.org/	Residential treatment center (RTC), Specialty Program (SPEC), Intensive Residential Treatment Services (IRTS—co-ed)	Ages 12.5 to 20	English, Spanish	Medicaid

Passaic County Shelters & Food Banks

Location	Telephone #	Fax #	website
Grandma's Place Hope Through Care 89 First Street Clifton, NJ 07011	973-262-5616	973-291-4322	www.hopethroughcare.org
Family Promise	201-833-8009	201-833-8011	www.bergenfamilypromise.org
Strengthen Our Sisters	973-657-1357	973-657-1667	www.strengthenoursisters.org
Strengthen Our Sisters	973-506-4577		
Hilltop Heights 213 Broadway Paterson, NJ 07501	973-279-2333 x: 118	973-790-1569	
Hilltop Haven 36-38 Circle Ave Paterson, NJ 07501	973-279-2333 x: 122	973-790-1569	
Father English 435 Main Paterson, NJ 07501	973-881-0280 x: 54	973-881-0043	
Eva's Village 393 Main Street Paterson, NJ 07051	973-523-6220	973-825-7297	www.evasvillage.org
Eva's Village/Women's Shelter 31 Jackson St. Paterson, NJ 07051	973-279-1004	973-279-1005	www.evasvillage.org

Eva's Village/Women & Children 25 Jackson St. Paterson, NJ 07051	973-742-2302 x:222	973-684-6561	www.evasvillage.org
Passaic County Women's Center	973-881-1450	973-881-0935	www.passaiccountywomenscenter.org
St. Peter's Haven	973-546-3406		
Center for Hope and Safety	201-836-1075 ext. 230		http://www.hopeandsafetynj.org
Hispanic Multi-Purpose	973-684-3320	973-684-7442	
Oasis 59 Mill Street Paterson, NJ	973-881-8307		
CUMAC Feeding People and Changing Lives 233 Ellison Street Paterson, NJ	973-742-5518	973-742-8115	www.cumacecho.org